

ORDINANCE NO. 259

ORDINANCE ACCEPTING ANNEXATION ON APPLICATION OF FREEHOLDERS.

To accept the application for the annexation of certain territory containing 2.867 acres of land in Monterey Township to the Village of Ottoville.

WHEREAS, a Petition for the annexation of certain territory in Monterey Township was duly filed by Clyde A. Schroeder, and

WHEREAS, the said Petition was duly considered by the Board of County Commissioners of Putnam County, Ohio, on June 6, 1994, and

WHEREAS, the Board of County Commissioners has approved the annexation of said territory to the Village of Ottoville as hereinafter described, and

WHEREAS, the Board of County Commissioners certified the transcript of the proceedings in connection with said annexation with the map to the Village Clerk who received same on June 14, 1994, and

WHEREAS, sixty (60) days from the date of said filing has now elapsed in accordance with the provisions of O.R.C. §709.04; now, therefore,

Be it ordained by the Council of the Village of Ottoville:

1. That the proposed annexation as applied for in the Petition of Clyde A. Schroeder and a majority of the owners of the land sought to be annexed and filed with the Board of County Commissioners of Putnam County, Ohio, on April 6, 1994, and which said Petition prayed for annexation to the Village of Ottoville, Ohio, of certain territory adjacent thereto as hereinafter described, and which said Petition was approved for annexation to the Village of Ottoville, Ohio by the Board of County Commissioners on June 6, 1994, be and the same is hereby accepted. See "Exhibit A" attached hereto and made a part hereof for description to said territory.

The certified transcript of the proceedings for annexation with an accurate map of said territory, together with other papers relating to the proceedings thereto of said County Commissioners are all on file with the Clerk of this Village Council and have been for more than sixty (60) days.

2. That the Village Clerk be, and he is, hereby authorized and directed to make three copies of this Ordinance to each of which shall be attached a copy of the map accompanying the Petition for annexation, a copy of the transcript of proceedings of the Board of County Commissioners

relating thereto and a Certificate as to the correctness thereof. The Village Clerk shall then forthwith deliver one copy to the County Recorder, one copy to the County Auditor, and one copy to the Secretary of State and do all things required by law.

PASSED: November 7, 1994.

APPROVED:

Patricia A. Horstman
Mayor

ATTEST:

Virginia M. Kerimnet
Clerk

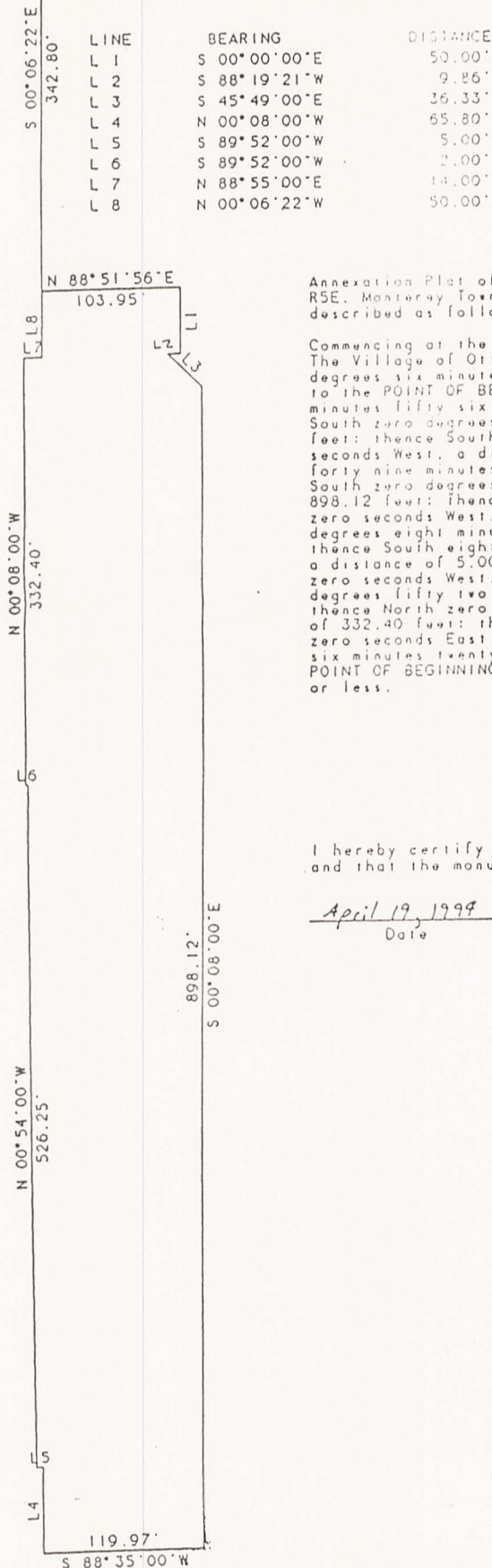
DESCRIPTION OF A PARCEL OF LAND TO BE ANNEXED TO THE VILLAGE OF OTTOVILLE:

Annexation Plat of a part of the Northwest Quarter of section 30, T1S, R5E, Monterey Township, Putnam County, Ohio and more particularly described as follows:

Commencing at the Northeast Corner of Out Lot 4 of Lye's Addition to The Village of Ottoville, Putnam County, Ohio; thence South zero degrees six minutes twenty two seconds East, a distance of 342.80 feet to the POINT OF BEGINNING; thence North eighty eight degrees, fifty one minutes, fifty six seconds East, a distance of 103.95 feet; thence South zero degrees, zero minutes, zero seconds East, a distance of 50.00 feet; thence South eighty eight degrees, nineteen minutes, twenty one seconds West, a distance of 9.86 feet; thence South forty five degrees, forty nine minutes, zero seconds East, a distance of 36.33 feet; thence South zero degrees eight minutes zero seconds East, a distance of 898.12 feet; thence South eighty eight degrees, thirty five minutes, zero seconds West, a distance of 119.97 feet; thence North zero degrees, eight minutes, zero seconds West, a distance of 65.80 feet; thence South eighty nine degrees, fifty two minutes, zero seconds West, a distance of 5.00 feet; thence North zero degrees, fifty four minutes, zero seconds West, a distance of 526.25 feet; thence South eighty nine degrees, fifty two minutes, zero seconds West, a distance of 2.00 feet; thence North zero degrees, eight minutes, zero seconds West, a distance of 332.40 feet; thence North eighty eight degrees, fifty five minutes, zero seconds East, a distance of 14.00 feet; thence North zero degrees, six minutes, twenty two seconds West, a distance of 50.00 feet to the POINT OF BEGINNING; said described tract containing 2.867 acres, more or less.

NE Cor OL 4. RR Spk Fd

Scale: 1" = 100'



Annexation Plat of a part of the Northwest Quarter of Section 30, T1S, R5E, Monterey Township, Putnam County, Ohio and more particularly described as follows:

Commencing at the Northeast Corner of Out Lot 4 of Lye's Addition to The Village of Ottoville, Putnam County, Ohio: thence South zero degrees six minutes twenty two seconds East, a distance of 342.80 feet to the POINT OF BEGINNING: thence North eighty eight degrees fifty one minutes fifty six seconds East, a distance of 103.95 feet: thence South zero degrees zero minutes zero seconds East, a distance of 50.00 feet: thence South eighty eight degrees nineteen minutes twenty one seconds West, a distance of 9.86 feet: thence South forty five degrees forty nine minutes zero seconds East, a distance of 36.33 feet: thence South zero degrees eight minutes zero seconds East, a distance of 898.12 feet: thence South eighty eight degrees thirty five minutes zero seconds West, a distance of 119.97 feet: thence North zero degrees eight minutes zero seconds West, a distance of 65.80 feet: thence South eighty nine degrees fifty two minutes zero seconds West, a distance of 5.00 feet: thence North zero degrees fifty four minutes zero seconds West, a distance of 526.25 feet: thence South eighty nine degrees fifty two minutes zero seconds West, a distance of 2.00 feet: thence North zero degrees eight minutes zero seconds West, a distance of 332.40 feet: thence North eighty eight degrees fifty five minutes zero seconds East, a distance of 14.00 feet: thence North zero degrees six minutes twenty two seconds West, a distance of 50.00 feet to the POINT OF BEGINNING: said described tract containing 2.867 acres, more or less.

I hereby certify this to be a true return of a survey made by me and that the monuments are found and/or set as indicated.

April 19, 1999
Date

Don M. Hibbard
Don M. Hibbard, R.L.S.
Registered Surveyor No. 6887
127 S. Walnut St.
Ottawa, Ohio 45875
419-523-5789



EXHIBIT 6

